

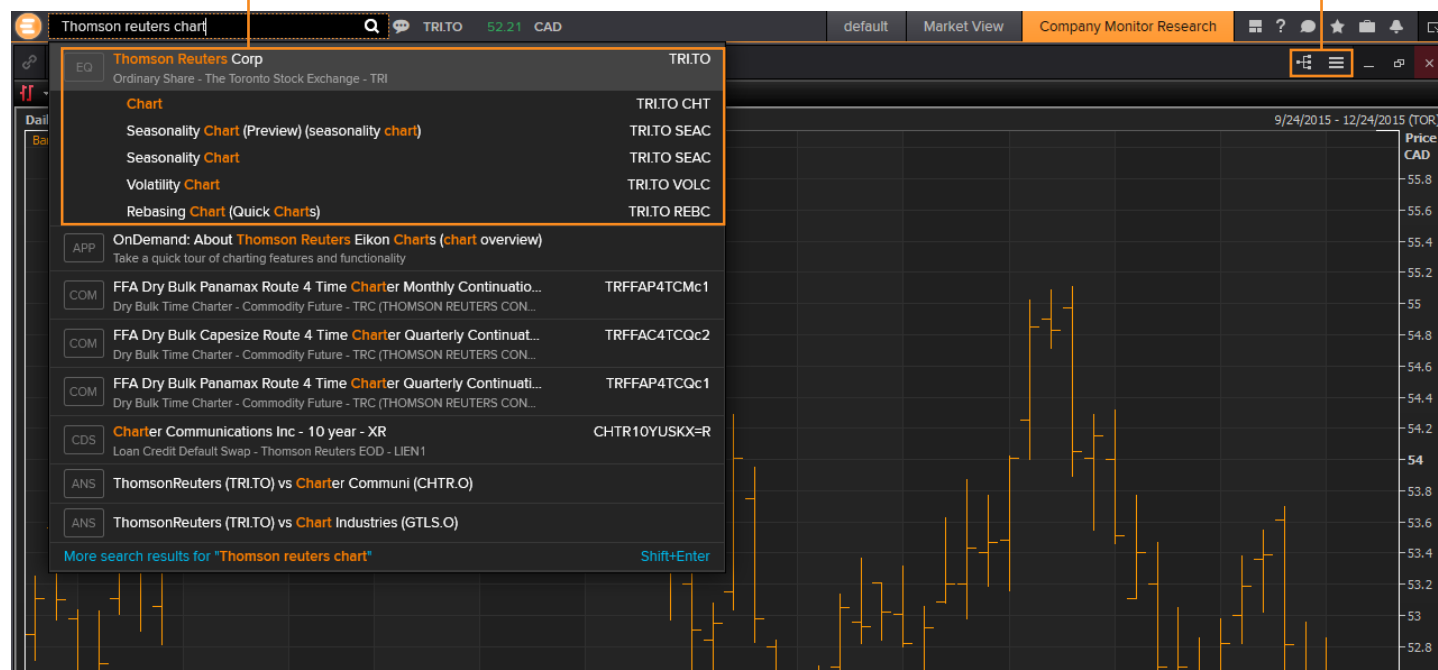
Chart Tools App

WHY SHOULD I USE THE APP?

The **Chart app** in Eikon is designed around your workflow with key analytical tools just a mouse click away and shortcuts for expert users. There is no need to learn complicated financial calculation formulas to manipulate the data. You can test scenarios in a few mouse clicks and adjust as required.

Start by typing a selected company and “chart” to see the quick options

Find related information or view the full list of menu items

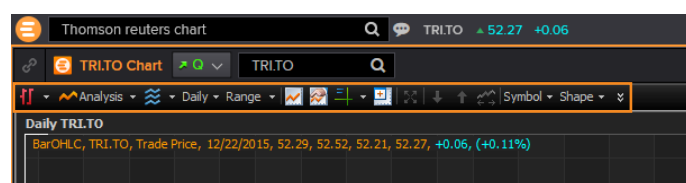


KEY FACTS

- Use **Chart Views** to create instant, interactive comparison charts, technical analysis charts, and much more.
- Create **template charts** and views, and apply them instantly to an asset class or use our **pre-built** charts to create instant analysis templates to suit your workflow and industry.
- Export data from any Chart App to applications, such as Excel, with just a few clicks.

TOP TIPS ON HOW TO USE THE APP

- To **access charts**, type a company name into the search, and add the word “Chart” to the search.
- The interactive **Company Chart View** gives you the daily price, charted over a default period of six months.
- Use the **sliders** along the bottom of the chart to specify your own period.
- Quick chart customization options are available at the top of the chart



- Move the mouse across the chart to view the price for each day and the latest price is highlighted in the Y axis.



- Select the **menu item** from the top right side of the chart to add to your chart or **right click** in the chart and select "Add". You can choose to add another instrument, trendline, annotation, shape and more.



- You can add the news for the item you are charting simply by pressing the "F9" key from your keyboard or right click and select "News at Date". The news will display for the current date or the date you have selected with your cursor.
- Right click and select "related" to view and navigate to the vast list of content available in Eikon.



NEED HELP?

You can contact us directly through Messenger using the Customer Support contact.

To learn more about the Chart Tools App:

training.thomsonreuters.com/elearn/e.php?e=462&pmf=2mf

You can access our entire blended learning offer on the Training site:

training.thomsonreuters.com/



THOMSON REUTERS™